



MONTHLY MEMBERSHIP PROGRESS REPORT

District 21 B

Results as of: 03/31/2018

GMT: WILLIAM PHILLIPI

LOCATION ARIZONA

GMT CA

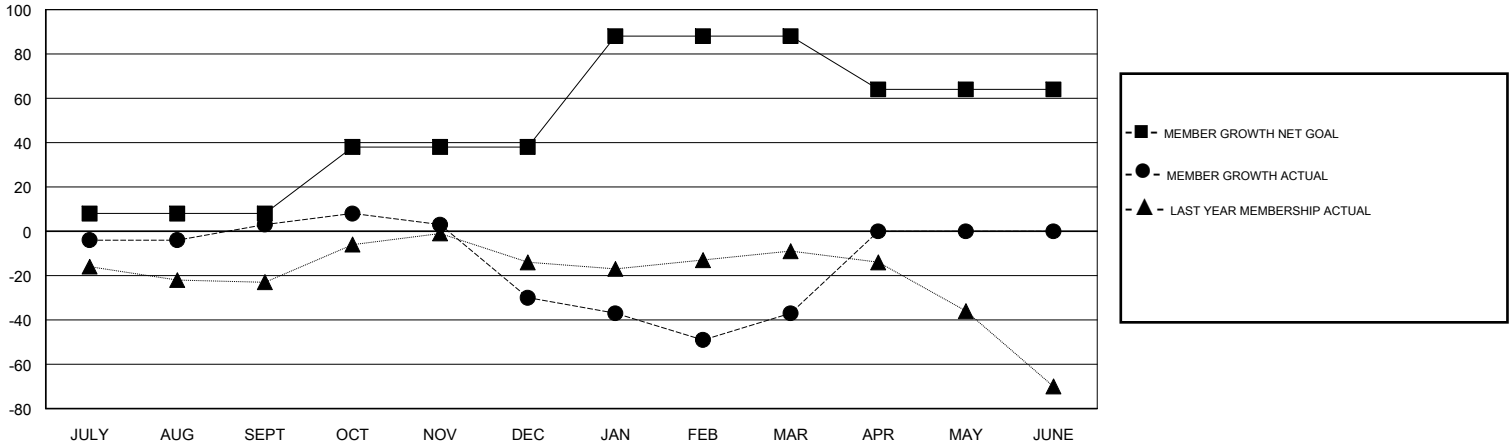
Clubs			
RESULTS FOR 2017-2018			
QUARTER	NEW CLUB GOAL	NEW CLUBS	DROPPED CLUBS
JULY/AUG/SEPT	0	0	0
OCT/NOV/DEC	0	0	1
JAN/FEB/MAR	1	0	0
APR/MAY/JUNE	0	0	0

Members			
RESULTS FOR 2017-2018			
QUARTER	MEMBER GROWTH NET GOAL	MEMBER GROWTH ACTUAL	DROPPED MEMBERS ACTUAL (including transfers)
JULY/AUG/SEPT	8	49	37
OCT/NOV/DEC	30	49	75
JAN/FEB/MAR	50	41	37
APR/MAY/JUNE	-24	0	0

GOALS AND ACTUAL NEW CLUBS CUMULATIVE



GOALS AND ACTUAL MEMBERS CUMULATIVE



DROPPED CLUBS: 1

27 CLUBS OF 43 ADDED 1 OR MORE NEW MEMBERS
--

GENDER DISTRIBUTION	
MALE	683 (55.71%)
FEMALE	543 (44.29%)
Women Percentage Fiscal Year Goal: 44%	

DROPPED MEMBERS	
DECEASED	15
CLUB CANCELLED	13
OTHER	121
TOTAL	149

[CLICK HERE FOR CUMULATIVE MEMBERSHIP DATA](#)

TOTAL FAMILY UNIT MEMBERS	337
FAMILY MEMBERS PAYING HALF DUES	171